

Louisiana Engineer & Surveyor Journal

May 2023 – Vol. 26 No. 2

Inside This Issue:



LPELS

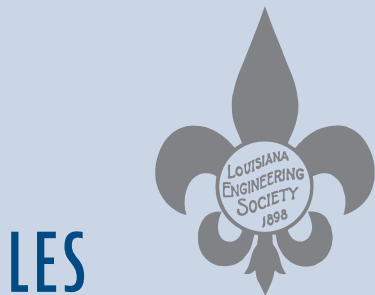
Message from
the Chairman

Page 3



Message from
the President/CEO

Page 9



LES

Presidential Privilege **Page 10**

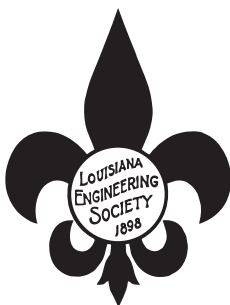
Golf Tournament **Page 15**

Meet Jim Ellingburg **Page 22**



James "Jim" Ellingburg, P.E.

LES President 2023 - 2024



Louisiana Engineering Society

9643 Brookline Avenue, Suite 116, Baton Rouge, LA 70809-1488

Phone: (225) 924-2021 Fax: (844) 274-6794

E-mail: les@les-state.org

Website: <http://www.les-state.org>



American Council of Engineering Companies of Louisiana

9643 Brookline Avenue, Suite 112, Baton Rouge, LA 70809-1488

Phone: (225) 927-7704 Fax: (225) 927-7779

E-mail: acecl@acecl.org



Louisiana Professional Engineering and Land Surveying Board

9643 Brookline Avenue, Suite 121, Baton Rouge, LA 70809-1488

Phone: (225) 925-6291

Website: www.lapels.com



LOUISIANA ENGINEER AND SURVEYOR JOURNAL

MAY 2023 - Vol. 26 No. 2

The Louisiana Engineer & Surveyor Journal

(ISSN: 15275965, USPS 588-360)

9643 Brookline, Suite 116

Baton Rouge, LA 70809-1488

This is the official publication of the Louisiana Engineering Society, the Louisiana Professional Engineering and Land Surveying Board, and the American Council of Engineering Companies of Louisiana.

This magazine is published quarterly. "PERIODICALS POSTAGE PAID at Baton Rouge, LA."

POSTMASTER-Please send address changes to:
The Louisiana Engineer & Surveyor Journal
9643 Brookline Ave., Suite 116, Baton Rouge, LA 70809-1488
Telephone: (225) 924-2021

LES ADVERTISING RATES

SIZE	COST PER ISSUE	COST PER YEAR
Full Page Inside	\$1,200	\$3,840
Full Page Back Cover	\$1,500	\$4,800
1/2 Page	\$700	\$2,240
1/4 Page	\$420	\$1,344

1) Prices quoted apply to camera-ready copy. A one-time charge will be added for composition of an ad, art work, or if changes are made during the contract period.

2) All ads must be prepaid. Advertisements with payment should be sent to LES by the 15th of the month preceding month of issue.

3) Published quarterly, February, May, August and November.

PUBLICATIONS COMMITTEE

Mary Claire Ruckert, *Managing Editor*

The Louisiana Engineering Society, the Louisiana Professional Engineering and Land Surveying Board, and the American Council of Engineering Companies of Louisiana do not guarantee the accuracy of statements made or necessarily concur with opinions expressed in the publication.

Message from the Chairman

Edgar Benoit

It is both an honor and privilege to serve as incoming chairman of the LAPELS (Louisiana Professional Engineering and Land Surveying) Board. I consider this goal the pinnacle of my engineering career.

For my first journal article, I would like to focus on threats to licensure of Louisiana professional engineers and land surveyors. "Since 2016, more than half of all states have introduced legislation or regulation that would erode and even destroy P.E. licensure..." according to NCEES (National Council of Examiners for Engineering and Surveying).

In Louisiana for the last few years, we have had this type of legislation and regulation introduced as bills. The engineering and land surveying societies in Louisiana have defended engineering and land surveying licensure. Many of these bills were defeated but some made it into law.

Historically, Louisiana's first Registration Act passed in 1908. What prompted the historic calls for licensure across the country? Disasters!!!

How do the Louisiana voters feel about professional licensure today? A recent poll of Louisiana voters was taken by ARPL (Alliance for Responsible Professional Licensing), of which NCEES is a founding member. ARPL is a unique coalition that brings together professional organizations.

"Louisiana voters recognize that rigorous professional licensure is the most effective way to protect the public's overall health, safety, and welfare," said David Cox, CEO of NCEES.

"The survey yielded these findings of Louisianans' views on the role and value of licensing:

"Louisiana voters recognize that rigorous professional licensure is the most effective way to protect the public's overall health, safety, and welfare," said David Cox, CEO of NCEES.

- **91 percent** of Louisiana voters believe it is important that licensing systems keep consumers and the public safe by establishing standards for professions that impact public health and safety.
- **91 percent** of Louisiana voters believe it is important that licensing systems ensure that competent, qualified professionals are servicing the public.
- **90 percent** of Louisiana voters say licensing is important to them because it helps consumers identify qualified professionals and access information about the professionals they hire..."

What are examples of Louisiana bills that are of a concern?

All the bills filed in this legislative session are not available at the time of this writing. However, two bills as currently written are of concern:



Edgar Benoit
Chairman

Board Members

Edgar P. Benoit, PE
Chairman

Wilfred J. Fontenot, PLS
Vice Chairman

Reginald L. Jeter, PE
Secretary

Connie P. Betts, PE
Treasurer

Linda H. Bergeron, PE

Byron D. Racca, PE

James H. Chustz, PLS

Janice P. Williams, PE

Vijaya Gopu, Ph.D., PE

Christopher K. Richard, PE

Chad C. Vosburg, PE

www.lapels.com

Board Staff

Donna D. Sentell
Executive Director

Cheron Seaman
Deputy Executive Director

Message from the Chairman *continued from previous page*

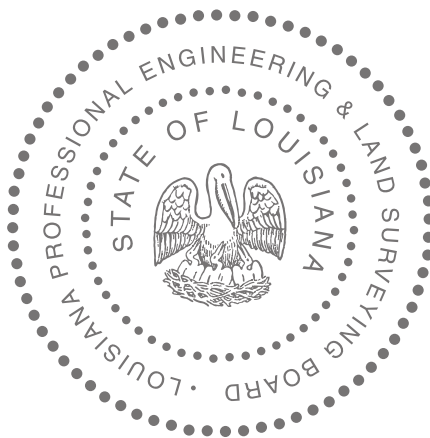
- This proposed law change requires that a person shall not be in violation of the present engineering law solely by the use of the word “engineer” or “engineering” in a name, job title, personnel classification, business title, verbal claim, sign advertisement, letterhead, card, or any other similar description or use.
- This proposed law change requires LAPELS to identify two LAPELS’ rules to repeal at the same time it proposes to adopt a new rule.

How is the LAPELS’ Board defending our engineering and land surveying rules and laws?

- This past year we formally adopted a Mission Statement: **“The Louisiana Professional Engineering and Land Surveying Board’s mission is to safeguard**

life, health, and property and to promote the public welfare in the practicing or offering to practice engineering or land surveying in the state of Louisiana.”

- One of the recently passed bills requires LAPELS’ to produce reports on the number of licensure applications rejected. The LAPELS’ Board rejected 7 applications out of 1,434 requests for licensure. But nevertheless, we plan to review our rules and laws to make certain we can defend any and all rejections based upon our safeguarding mission.
- Finally, LAPELS’ Board will continue our teamwork approach with engineering and land surveying organizations to safeguard life, health, and property in Louisiana.



2023 LAPELS Board Meetings:

Monday, June 5, 2023

Monday, July 24, 2023

Monday, October 16, 2023

Executive Director's Report

By Donna Sentell, Executive Director

Revisions to the Board Rules

The importance of staying current with the Board rules cannot be overstated. Recently, I had a conversation with a licensee on a specific rule. Unfortunately the conversation was disjointed and unproductive as the licensee was referencing a copy of the rules last updated in 1991. This serves as a reminder that it is crucial for licensees to reference the most up-to-date version of the Board rules.

It's worth noting that the Board rules can be updated two or three times a year. The Board rules can be accessed on our website, where you can obtain the most current version of the Laws of the Board (August 2022) and the Rules of the Board (February 2023): <http://lapels.com/LawsRules.html>

The website also provides a link to recent changes to the rules: http://lapels.com/RecentChanges_Rules.html

The most recent changes to the Board rules, published in February 2023, include revisions to Rule 105, which defines the practice of engineering and clarifies the incidental practice of engineering by an architect. Additionally, Rule 1505 (B) and

(C) has been revised to require applicants, who submit work experience not under the supervision of a PE or PLS, to provide an explanation showing why the experience should be considered acceptable. (The revisions to rule 1505 also resulted in rule 1527 being repealed.)

It is worth noting that rule changes dating back to 2011 can also be found on the website. This list serves as a quick reference for anyone who needs to review a specific revision.

Finally, it is important to remember 2501 (B) "All licensees are charged with having knowledge of the licensure law and the rules of the board and shall be deemed to be familiar with their provisions and to understand them."

If you've read this far, I encourage you to download the most current version of the laws and the rules of the Board. Call or email (donna@lapels.com) me with your questions; as the best part of my job is promoting licensure to engineering and surveying students and staying connected with our licensees.



Donna Sentell
Executive Director



Christopher P. Knotts, P.E. Honored at Joint Zone Meeting in Houston

Chris Knotts, a LAPELS Emeritus member and former NCEES President, received the **Southern Zone Distinguished Service Award** at the NCEES Joint Zone meeting in Houston, Texas held April 27-29, 2023.

Knotts was recognized for his outstanding service and contributions to the Southern Zone and the National Council of Examiners for Engineers and Surveyors, NCEES. He has been involved with Zone and NCEES leadership since 2016, serving as the Southern Zone Secretary/Treasurer and Vice President and was elected NCEES President in 2020. He continues to serve NCEES on various committees.

On behalf of LAPELS, we're proud of you Chris.

LAND SURVEYOR INTERNS

Belaire, Blake, LSI
Bergeron, Cody, LSI
Caraway, Matthew, LSI
Comeaux, Walter, LSI
Ginn, Kevin, LSI
Hodges, Tyler, LSI

PROFESSIONAL SURVEYOR

Arnold, Joshua, PLS
Atchley, Brian, PLS
Evans, Trevor, PLS
Forge, Darren, PLS
Herrod, Jonathan, PLS
Johnson, William, PLS
Jusselin, Tyler, PLS
Landry, Colby, PLS
Meinecke, Gregory, PLS
Mire, Colby, PLS
Morris, Jonathan, PLS
Ona, Lazarus, PLS
Pappas, Timothy, PLS
Patrick, Clinton, PLS
Reyes, Adrian, PLS
Rogers, Jason, PLS
Van Norman, Patrick, PLS

SURVEYING FIRMS

Jamie M. Bordelon PLS LLC, VF
Louisiana Lidar LLC, VF
Manhard Consulting, LTD., VF
Moon Surveying, LLC, VF
Prairie Engineers, P.C., Corporation, VF
Red Plains Surveying Company, VF
Red Stick Power, LLC, VF
Texas Professional Surveying, L.L.C., VF

PROFESSIONAL ENGINEERS

Abreu, Ruben, PE
Aguirre Deras, Max, PE
Alhossami, Molham, PE
Alirezaei Abyaneh, Roya, PE
Anwar, Rizwan, PE
Appler, James, PE
Arceneaux, Stephen, PE
Armstrong, Destiny, PE
Arnold, Michael, PE
Ashby, John, PE
Badat, Ayesha, PE
Baden, Richard, PE
Balakrishnan, Athulya, PE
Ball, Elizabeth, PE
Banneyake, Banneyake, PE
Banta, Garrett, PE

Barr, Aaron, PE
Bazzell, Trevor, PE
Beatty, Daniel, PE
Beck, David, PE
Bell, Justin, PE
Bennett, Everett, PE
Bennett, William, PE
Bentin, Edward, PE
Bhalja, Manan, PE
Bibilonisamoblin, Sarah, PE
Bishop, Joshua, PE
Bishop, Troy, PE
Black, Jonathan, PE
Black, Taylor, PE
Bland, Frank, PE
Blankenship, Amanda, PE
Bocox, John, PE
Bollinger, Jeffrey, PE
Bordelon, Julian, PE
Boussag, Ismail, PE
Bowen, Richard, PE
Brown, Ethan, PE
Brown, Jeffrey, PE
Brown, Scott, PE
Bruck, Nicholas, PE
Brudz, Adrian, PE
Buamah, Chief, PE
Buckley, Mallory, PE
Buencamino, Reynaldo, PE
Busch, Heidi, PE
Buske, Matthew, PE
Butler, Christopher, PE
Byers, David, PE
Cable, Zachary, PE
Caezza, Rachel, PE
Caldwell, Stephanie, PE
Callison, Thomas, PE
Canon, Christian, PE
Canseco Nino de Rivera, Luis, PE
Carvalho, Kim, PE
Carter, Aidan, PE
Chaipaisan, Tawatchai, PE
Chak, Sarah, PE
Chatelain, Daniel, PE
Chen, Jiyang, PE
Chilakala, Sudarsana, PE
Childs, Matthew, PE
Chorazak, Michael, PE
Chudomel, Kymberly, PE
Ciolko, Przemyslaw, PE
Cook, Stephen, PE
Cooper, Brian, PE
Cope, Timothy, PE
Cortez, Peyton, PE

Cotten, Joseph, PE
Cowan, Ashley, PE
Cuevas, Michael, PE
Cyphers, Rex, PE
Daley, Patrick, PE
Dane, Brendan, PE
Dar, Naureen, PE
Das, Tridib, PE
Davies, Robert, PE
De la Garza, Victor, PE
De Leon, Ernest, PE
De Zayas, Benjamin, PE
Dedebant, Sean, PE
Delatte, James, PE
Dew, Christopher, PE
Diaz, Kevin, PE
Dixon, Jeremy, PE
Dobinsky, Jan, PE
Donaldson, Deborah, PE
Drouant, Mason, PE
Dunavant, Aaron, PE
Dunn, Jason, PE
Duplant, Corinne, PE
Eads, Brian, PE
Eckert, Mark, PE
Espinosa, John-Roland, PE
Ewing, Mark, PE
Fessler, John, PE
Fitzpatrick, Phillip, PE
Fletcher, Chad, PE
Fortin, Kyle, PE
Franco, Kenny, PE
Garza, Pablo, PE
Gaure, Prateek, PE
Giusto, Christopher, PE
Gleusner, Jake, PE
Goeckel, Jeremy, PE
Gomez, Skylar, PE
Goza, Evan, PE
Grantham, Benjamin, PE
Gray, Logan, PE
Green, Nathan, PE
Greene, William, PE
Grimes, Doc, PE
Guichet, Robert, PE
Gully, Michael, PE
Hagler, Dallas, PE
Hall, Jarod, PE
Hanson, Jesse, PE
Hartzel, Brian, PE
Hebert, Brenton, PE
Hebert, Corbin, PE
Hebert, Jed, PE
Heimbigner, Chad, PE

NEWLY CERTIFIED & LICENSED • JANUARY 01 - MARCH 31, 2023

Henry, Matthew, PE
Holt, Blaine, PE
Howell, Dan, PE
Huang, Yu-Hsuan, PE
Hussain, Adeel, PE
Jackson, Kimberly, PE
Jin, Jin, PE
Johnson, Joshua, PE
Kachura, Christopher, PE
Kalina, Nathan, PE
Kelley, Richard, PE
Kelly, Shannon, PE
Kim, Linh-Thien, PE
Kipfer, Brandon, PE
Kiss, Derek, PE
Knox, Jessica, PE
Kozan, Joshua, PE
Kramer, Christina, PE
Kuhuski, Aaron, PE
Kung, Linda, PE
Kuntz, Preston, PE
Lacombe, Austin, PE
Lancashire, Douglas, PE
Lanier, Morgan, PE
Lankutis, Justin, PE
Le, Julian, PE
Lee Lum, Kevan, PE
Leoncio, Iris, PE
Li, Yun, PE
Lin, Bryan, PE
Linneman, Gregory, PE
Littlefield, Joshua, PE
Loga, Mark, PE
Logan, Jarrett, PE
Logue, Joseph, PE
Louque, Bryan, PE
Lukkarila, Chad, PE
Lynde, Peter, PE
Madlem, Troy, PE
Makan, Brian, PE
Malhotra, Sanjeev, PE
Mallahan, Sean, PE
Mancuso, Christopher, PE
Maristany Santamaria, Luis, PE
Marko, William, PE
Massey, Dallas, PE
Mattson, Joseph, PE
Mayeux, Trenton, PE
Mayforth, George, PE
McCartney, Matthew, PE
McDonald, Michael, PE
McGregor, Michael, PE
McKinley, Pearce, PE
McManus, Roger, PE

McNally, Brad, PE
Melendez, Christian, PE
Merk, Allen, PE
Middleton, James, PE
Miller, Ronald, PE
Milling, Adam, PE
Mitchell, Daniel, PE
Morales, Tomas, PE
Moreau, Nicolas, PE
Morrison, Wade, PE
Mote, Jason, PE
Murray, Richard, PE
Nowland, Charles, PE
O'Neill, Allison, PE
Oetjen, Eric, PE
Pait, Daren, PE
Palfi, Robert, PE
Panlilio, David, PE
Paquette, Robert, PE
Parnell, Nathan, PE
Patel, Kartavya, PE
Pathak, Binay, PE
Pauling, Bryan, PE
Pearson, Colin, PE
Pecquet, Kenneth, PE
Penso, Joshua, PE
Perkins, John, PE
Phillips, Marcus, PE
Pivarnik, Zachary, PE
Pluta, Alexander, PE
Puentes, Yoel, PE
Purcell, Karen, PE
Qin, Yi, PE
Rahn, Robbie, PE
Randle, Jason, PE
Rapolti, Jeffrey, PE
Rappold, Scott, PE
Ratcliff, Mark, PE
Remmert, Marc, PE
Revell, Stephen, PE
Rich, Brandon, PE
Richardson, Jere, PE
Rigos, Lee Rito, PE
Riley, Alex, PE
Roberts, Nicholas, PE
Roberts, Shawn, PE
Robertson, Brian, PE
Roth, Adam, PE
Rusinkiewicz, Piotr, PE
Russo, Francesco, PE
Samee, Minahil, PE
Sands, Kyle, PE
Schaffer, Joshua, PE
Schiro, Robin, PE

Schwing, Michael, PE
Seiwald, Rosemary, PE
Sessions, Jacob, PE
Sewell, Christopher, PE
Sharma, Piyush, PE
Shestopalov, Janie, PE
Short, Gregg, PE
Simon, Max, PE
Simoneaux, Jennifer, PE
Simpson, Alex, PE
Smootenburg, Brian, PE
Snow, Nason, PE
Song, John, PE
Soti, Piyush, PE
Spikes, Alexander, PE
Spivey, Heath, PE
Spooner, Faren, PE
Spybey, Richard, PE
Stark, Andrew, PE
Stark, Charles, PE
Stav, Travis, PE
Stehn, Ryan, PE
Sterescu, Mihai, PE
Sutterer, Jeffrey, PE
Swensson, Matthew, PE
Tan, Ritchie, PE
Tannous, Fares, PE
Taylor, Luke, PE
Templeton, Sebastien, PE
Terry, Justin, PE
Thai, Charles, PE
Theodorakakos, Peter, PE
Thomas, Cherian, PE
Thomas, Ray, PE
Thompson, David, PE
Tilley, Andrew, PE
Toca, Carlos, PE
Torry, Stephen, PE
Tran, Le, PE
Trotter, Brock, PE
Urueta, Francisco, PE
Vecchio, Robert, PE
Vu, Phuong, PE
Waclawczyk, Johnny, PE
Wahoff, David, PE
Walker, William, PE
Weiskopf, John, PE
Westendorff, Carver, PE
Widger, Theodore, PE
Wijaya, Julisan, PE
Williamson, Jonathan, PE
Wood, Douglas, PE
Wright, Eric, PE
Yates, Peter, PE

NEWLY CERTIFIED & LICENSED • JANUARY 01 - MARCH 31, 2023

York, Kyle, PE
Zach, Bryan, PE
Zein, Ahmed, PE
Zimmerman, Abigail, PE

ENGINEER INTERNS

Adesina, Fawaz, EI
Albritton, Joel, EI
Ampofo-Twumasi, Kofi, EI
Arnold, Vincent, EI
Ash, Austin, EI
Aubert, Christopher, EI
Baker, Garrett, EI
Bogues, Brady, EI
Britton, Anastasia, EI
Carney, Madison, EI
Casteix, Christopher, EI
Causey, Alex, EI
Chandler, Christopher, EI
Chapman, Austin, EI
D'Aquin, Daniel, EI
Dauzat, Elise, EI
Dibeh, Marouf, EI
Doty, Matthew, EI
Dunaway, John, EI
Evans, William, EI
Faucheaux, John, EI
Finney, Braden, EI
Hamed, Mohammad, EI
Hawkins, Jesse, EI
Henssler, Dane, EI
Hornsby, Alexis, EI
Hyde, Ryan, EI
Jackson, Austin, EI
Jacobs, Marvin, EI
Jensen, Lars, EI
King, Timmon, EI
Knighten, William, EI
Kyser, Cody, EI
Landry, Mitchell, EI
LeFrere, Joseph, EI
Licciardi, David, EI
Lyons, Lucy, EI
Mahdi, Moinul, EI
Mathis, John, EI
Matthews, Nolan, EI
McBride, Sean, EI
McCarthy, Connor, EI
McKisson, Samantha, EI
Melancon, Wesley, EI
Midyette, Jason, EI
Miller, David, EI
Miranda-Melendez, Ramon, EI
Muldowny, William, EI

Murray, Kenneth, EI
Nguyen, Daniel, EI
Ortego, Devan, EI
Partin, Devin, EI
Perrin, MaxAnthony, EI
Pohlman, Elizabeth, EI
Rabalais, Christian, EI
Rawls, Connor, EI
Reyes, Brianna, EI
Robicheaux, Ashley, EI
Rodgers, Cameron, EI
Ruiz, Andrew, EI
Sampsel, Andrew, EI
Sauervin, William, EI
Scalise, Nicole, EI
Theng, Irving, EI
Theriot, Blake, EI
Thiaville, Jacob, EI
Thompson, Jean Pierre, EI
Washington, Patrick, EI
Wen, Sirui, EI
Wilson, Brandon, EI
Wolf, Christian, EI
Wood, William, EI
Zografakis, Christopher, EI

ENGINEERING FIRMS

123 Engineering, LLC, EF
Aegis Engineering and Management Group, LLC, EF
Allegiance Crane & Equipment LLC, EF
Alliance Transportation Group, LLC, EF
AltairStrickland, LLC, EF
AMA Consulting Group, LLC, EF
ASM Engineering Consultants, LLC, EF
Aztec Engineering Group, Inc., EF
B&J HKB, Inc., EF
Barnett Consulting Engineers, Inc., EF
Beam, Longest & Neff, L.L.C., EF
BG Buildingworks, Inc., EF
California Expanded Metal Products Company, EF
Capital Technical Services, LLC, EF
CBRE Design Collective, Inc., EF
CEC Corporation of Oklahoma, EF
CFW Associated Engineers, Inc., EF
Components & Cladding Specialty Engineers, LLC, EF
Crockett Engineering Consultants, L.L.C., EF
Cypress Consulting Services LLC, EF
Duffy Engineering, LLC, EF
Epic Engineering Group LLC, EF
Florida Engineering LLC, EF
Gaither Wren Consulting, LLC, EF
Gartner Refrigeration, Inc., EF

Goodhead Consulting Engineers, LLC, EF
Green Acorn LLC, EF
Greensite Engineering, Inc., EF
GulfSouth Engineering, LLC, EF
Hallam Associates, Inc., EF
Idergy PLLC, EF
IMEG Consultants Corp, EF
LaBella Associates, D.P.C., INC., EF
LaPorte MEP Design, LLC, EF
Legacy Civil Engineering, LLC, EF
Louisiana Lidar LLC, EF
Mallett Buildings, EF
Metalock Corporation, EF
MFD Home Certifications, US LLC, EF
Midwest Electrical Experts, LLC, EF
Motz Consulting Engineers, Inc., EF
Norton Corrosion Limited, LLC, EF
Notch8 LLC, EF
Nowland Services, PLLC, EF
Numerical Advisory Solutions, LLC, EF
Olsson Industrial Electric, Inc, EF
PE/CM Crawford, LLC, EF
Performance Based Fire Protection Engineering, PLLC, EF
Pinnacle Consulting, Inc. (Arizona), EF
PPM Consulting LLC, EF
Ramtech Building Systems, Inc., EF
Richard Barrios Consulting Engineers, Inc., EF
SGS Engineering, LLC, EF
Sightline Commercial Solutions LLC, EF
SPATCO Energy Solutions, LLC, EF
StrongTower Supply, LLC, EF
Structural Engineering Associates, L.L.C., EF
The John R. McAdams Company, Incorporated, EF
Theta Consulting LLC, EF
Thompson Consultants, Inc., EF
TKL Engineering, Inc., EF
V3 Consulting Engineers, LLC, EF
Victaulic Company, EF
W5 Solutions, LLC, EF
Weitz Professional Services, LLC, EF
West Fork Engineering, LLC, EF
Wyssling Consulting, PLLC, EF
ZFI Engineering Co., EF



Barker Dirmann
President/CEO

American Council of Engineering Companies of Louisiana

By Barker Dirmann, President/CEO

there no quotes comparing lawmakers to butchers? Because that would be incredibly offensive to the butcher. I'm kidding. To agree with Mr. von Bismarck, one may assume that apathy or avoidance is the best way to interact with lawmaking. For me, such an opinion could not be more misplaced. A well-informed lawmaking body is critical for quality policy making and it is our responsibility as an organization, as businesses, and as individuals to educate our legislators and inform them of how proposed legislation will positively or negatively impact the engineering industry.

When talking with prospective members or even current members about the benefits ACEC of Louisiana (ACECL) offers, I first discuss our advocacy efforts. The purpose of ACEC of Louisiana is to enhance the business of engineering. Though we accomplish this mission in many ways, the primary method is government advocacy. As it is every year, the Spring finds our efforts and resources focused on the Regular Legislative Session which started April 10.

From tax and education policy to licensure and revenue-generating measures, ACECL engages the legislature on a wide spectrum of bills impacting the engineering community, but we rely on our members to not only inform and educate us on the issues but to also reach out to legislators as individuals to express your position on specific bills. From now until June 8th, ACECL and LES will be sending our respective members "Call to Action" emails seeking your engagement in the legislative process so be on the lookout and get engaged.

In almost every legislative session, ACECL spearheads an issue or two that seeks to better the business of engineering. This year ACECL sponsored two pieces of legislation. The first, HB 80 by Representative Foy Gadberry, that removes the "deemed approved" provision added to the law on alternative product approval requests and would increase the allotted review time from

3 to 10 days. The second, HB 573 by Chairman Jack McFarland, seeks to strengthen liability protections for consultants contracting with public entities by adding said protections to the "Prohibited (Contract) Provision" subsections in the public bid law.

Though I wish I could say most of our political capital is spent supporting bills that improve the business of engineering, the truth is as much or more time is spent opposing measures that would negatively impact our member firms and the engineering profession. For example, HB 333, by Rep. Thomas Pressly, seeks to grandfather the civil engineer exception related to the unlicensed practice of architecture. The grandfather provision reads that the exception shall still apply to engineers who "have been established as practicing architecture and were licensed as a civil engineer before January 1, 2023." Another bill, HB 546 also authored by Rep. Pressly, would uncut LAPELS' ability to cite individuals and/or businesses representing themselves as providers of professional engineering services when the individual and/or business is not properly licensed in the state.

We are also tracking all tax bills that involve removing the state income tax or reducing the state sales tax. On its face, you would think a business-focused organization like ACECL would support tax-reducing measures, however, the state budget, unlike the federal budget, must be balanced each year. In theory, a reduction in revenue must be filled by another revenue source. This is most easily done by expanding the sales tax base by sunseting or removing sales tax exemptions currently applied to different goods and services. Engineering and land surveying services are currently exempt from sales and use taxes which would put them on the list of services at risk of losing their exemption. Though engineering services are not listed in any bill seeking to broaden the sales tax base, surveying was listed in HB 423 by Rep. Richard Nelson.

These are just a few of the examples of the bills ACECL will advocate for or against and why we rely on an engaged membership to add watching eyes to the legislative process but to also provide us with the information needed to effectively advocate for you. Every week ACECL sends a Capitol Calculus (legislative update) out to our members, if you would like to receive these updates or have questions/concerns regarding legislation impacting the engineering industry, please email me at bdirmann@acecl.org.

ACEC OF LOUISIANA AFFILIATE MEMBERS

ACEC Business Insurance Trust
ACEC Life/Health Insurance Trust
Advanced Drainage Systems, Inc.
BAR Environmental
Barriere Construction Group, LLC
Benefits One, LLC
BFM Corporation, LLC
BRAYN Consulting, LLC
Breazeale, Sachse & Wilson, LLP
Brown & Brown of Louisiana
Cadence Insurance
Cycle Construction
CxA Services, LLC
Durable Piling Restoration, LLC
Ecko360
ELOS Environmental, LLC
Environmental Technical Sales, Inc.
Foley & Judell, LLP
Galloway Johnson Tompkins Burr & Smith, LLP
Gulf South Technology Solutions
Hannis T. Bourgeois, LLP
Headlight
HUB International
Industrial Fabrics, Inc.
Keogh, Cox & Wilson
Lord & Winter
Quality Sitework Materials, Inc.

Save the Date 20-22 July 2023



ACEC
AMERICAN COUNCIL OF ENGINEERING COMPANIES
DEEP SOUTH CONVENTION
Sandestin Golf & Beach Resort

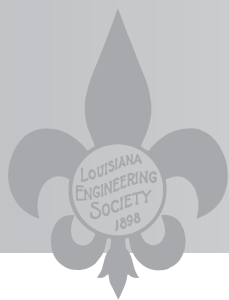
BOOK NOW - GROUP 24Q7G5

800-320-8115

<http://www.Sandestin.com/24Q7G5>

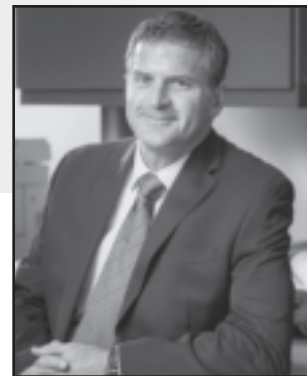


ACEC/L
AMERICAN COUNCIL OF
ENGINEERING COMPANIES OF LA



Presidential Privilege

Chad A. Bacas, P.E.



Chad Bacas, P.E.
Louisiana Engineering Society President

As I close out my year as President, I've been blessed to work with so many wonderful colleagues and friends that have continued with great pride to allow the Louisiana Engineering Society (LES) to maintain its vision and mission. The past year has been one of transition with our new Executive Director, Mary Claire Ruckert, who, without a doubt, has made this transition as seamless as possible. I've enjoyed working alongside her as she has lots of wonderful new ideas bringing more efficiency to our already well-oiled machine.

With most engineers utilizing our left brain more than our right, we often struggle with the English language and more specifically grammar. As we become more familiar with this "new" technology of AI (artificial intelligence) using chatbots such as Chat GPT, we see the benefits of helping people in a very smooth way and giving the best solutions for any problems. While we all want to take advantage of this technology, we must be careful with the disadvantages and impacts it can have on our engineer-

ing community. Certainly not personable at all but here's a sample of the output when I asked Chat GPT to write my article for this journal - HA!

My request of Chat GPT:

write a presidential privilege article for the Louisiana engineering journal and target the members of LES and include any current topics about the Louisiana legislative session, available infrastructure funding, and any other relevant engineering topics. Keep the article about 3 paragraphs long.

Abbreviated Response: As President of the Society, I am honored to address you in this edition of the Louisiana Engineering Journal.... (2nd paragraph) We are pleased to report that there are significant funds available for infrastructure projects in our state. With the recently passed federal stimulus package, Louisiana is set to receive billions of dollars in funding for infrastructure investment. As engineers, we have a critical role to play in identifying the most pressing infrastructure needs and ensuring that these funds are used effectively and efficiently. In addition, to federal funding, the....

I demonstrate this above, to remind all of us that technology is coming at a velocity almost no one outside AI companies fully realizes. Be curious, be critical, and embrace it. Use it to your advantage but be aware that AI can spread misinformation just as easily as good information.

Help LES continue to be the only active engineering organization in the State of Louisiana that serves all disciplines with great pride by participating in our upcoming Annual Sponsorship Opportunities. With a couple of sponsor levels (Platinum and Gold), your firm can take advantage of the benefits it offers, while allowing LES to be our Voice in the engineering community.

I would like to close by saying how grateful I was to be a part of a Board of Directors and staff working diligently and productively for the engineers of our state and the members of our Louisiana Engineering Society. We are living in a time of unprecedented opportunities and challenges, and we play a unique role in shaping the future of our state. Let us continue to work together toward a brighter future for Louisiana.

Join us June 8 & 9 at Carter Plantation

THURSDAY, JUNE 8, 2023
12 - 12:50 PM

General Membership Meeting Luncheon

1 - 3:50 PM

Annual Meeting (3 PDH Credits Available)

5:30 - 8:00 PM

LES Membership Dinner with Guest Speaker
Billy Williamson, P.E.

Department of Transportation & Development
Public Works & Water Resources

FRIDAY, JUNE 9, 2023
8:00 AM

4th Annual LA Transportation Partners'
Benefit Golf Tournament
Carter Plantation

23475 Carter Trace • Springfield, LA 70462

THE LOUISIANA ENGINEERING SOCIETY

Who we are:

Since 1898 LES has been the flag bearer for the licensure and professional practice of engineering in Louisiana. The Society represents the individual Engineer in all technical disciplines and all occupational areas of practice, including construction, education, government, industry, and private practice. Our organization is dedicated to the continuous advancement of the professional engineer by:

- Encouraging engineers to elevate their skills, competencies, and ethics
- Upholding that the health, safety, and welfare of the public are best served when engineering work is performed by or under the supervision of a professional engineer
- Supporting and promoting high standards for engineering education
- Recognizing engineering achievements and academic scholarships
- Contributing services to the public and the profession
- Advocating professional registration of all engineers

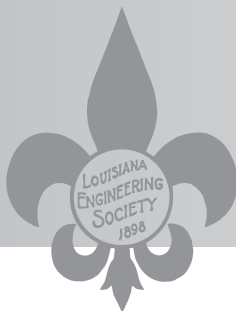


What We Do:

Through our eight chapters in Alexandria, Baton Rouge, Bayou, Lafayette, Lake Charles, Monroe, New Orleans, and Shreveport, LES exemplifies its long-term legacy and commitment to our state by providing:

- Recommends appointments for 9 of the 11 LAPELS Board members
- Best legislative lobbyist in Louisiana tracking legislative bills for the Society
- Two Annual Conferences for members to acquire multiple PDHs and further education
- Host multiple 8-hour seminars to help members gain Life Safety Code & ADA compliance
- Appointment of two LES members to the State's Facility Planning and Control Engineering Selection Board
- Recognize members' accomplishments by awarding up to 8 annual awards
- Offer On Demand Recorded Webinars for members to help meet PDH requirements
- Provides excellent networking opportunities
- Publishes *The Louisiana Engineer & Surveyor Journal* quarterly
- LES Members get a discounted rate for all LES conferences and seminars both live and virtual
- Provide Leadership Opportunities by serving on State Board, Chapters' Boards, and State Committees
- Provide Scholarships for college students studying engineering
- Sponsors state level & participates in national level MATHCOUNTS Competitions

The Louisiana Engineering Society
9643 Brookline Ave, Ste 116
Baton Rouge, LA 70809
(225) 924-2021
les@les-state.org



Society News

Mary Claire Ruckert, LES Executive Director



Mary Claire Ruckert
LES Executive Director

CONNECT WITH LES ONLINE!



Like Us on Facebook!
www.facebook.com/LouisianaEngineeringSociety

CALENDAR OF EVENTS

May 2023

- 12 Chapter Officers & Committee Appointments Due to State Office**
- 12 Committee Budget Requests Due to State Office**
- 13-16 MATHCOUNTS National Competition –
Lake Buena Vista, FL**

June 2023

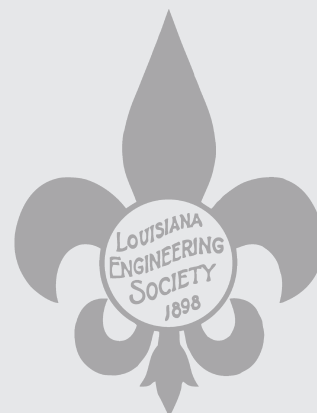
- 8 Legislative Session Adjourns**
- 8 LEF & LES Board Meeting – Springfield, LA**
- 8 2023 LES General Membership Meeting –
In conjunction with LES Annual Meeting in Springfield, LA
OR Virtual**
- 8 2023 LES Annual Meeting – Springfield, LA**
- 9 4th Annual LA Transportation Partners Golf Tournament—
Springfield, LA**

LES Vision Statement:

*The Louisiana Engineering Society is the recognized advocate of
all licensed engineers in the State of Louisiana.*

LES Mission Statement:

*The Louisiana Engineering Society serves to advance the engineering profession by:
Encouraging ethical and competent practice through licensure and legislative involvement.
Nurturing public awareness of engineers' contributions to society.
Growing the society through licensure & LES membership and public service.
Recognizing engineering achievements.*



WELCOME NEW MEMBERS

ALEXANDRIA CHAPTER

Garrett Joseph Baker, E.I. Associate Member*
Elise Catherine Dauzat, E.I. Associate Member*
Ted Eilts, P.E. Member
Blaine C.R. Holt, P.E. Member
Wade, Raymond, Morrison, P.E. Member
Cameron James Rodgers, E.I. Associate Member*

BATON ROUGE CHAPTER

Max Abelardo Aguirre Deras, Ph.D., P.E. Member
Joel Christopher Albritton, E.I. Associate Member*
Edward Aydell, P.E. Member
Garret Davis Banta, P.E. Member
Edward Michael Bentin, P.E. Member
Brad Bourgoyne, Individual Sustaining
Stefanie Castracane, E.I. Associate Member
Stephen Ryan Cook, P.E. Member
Jordan Daniels, E.I. Associate Member*
Adam Davis, P.E. Member
Jeffrey Decoteau, P.E. Member
Aaron Dunavant, P.E. Member
Edward J. Everitt, P.E. Member
Tiffany Gurganus, Individual Sustaining
Traeneisha Harry, Student Member
David J. Hebert, P.E. Member
Timmon Pendall King, E.I. Associate Member*
Joshua Bryan Kozan, P.E. Member
Mikayla Lawrence, Individual Sustaining
Laura LeBouef, Individual Sustaining
Jarrett Logan, P.E. Member
Moinul Mahdi, E.I. Associate Member
Sean Robert McBride, E.I. Associate Member
Samantha Louise McKisson, E.I. Associate Member*
Jason Rogers Midyette, E.I. Associate Member
Ramon Arturo Mirando-Melendez, E.I. Associate Member*
Daniel Tien Nguyen, E.I. Associate Member
Austyn Joseph Oubre, E.I. Associate Member*

Devin James Partin, E.I. Associate Member*
Andrew James Sampsel, E.I. Associate Member*
William Gabriel Sauerwin, E.I. Associate Member*
Craig Schiro, P.E. Member
Estuardo Silva, Individual Sustaining
Jennifer Whipple Simoneaux, P.E. Member
Erik Thomas Smith, P.E. Member
Ritchie Tan, P.E. Member
Kofi Kakyire Ampofo Twumasi, E.I. Associate Member*
Laila Vinti, Student Member
Sirui Wen, E.I. Associate Member

BAYOU CHAPTER

Taylor Alexander LeBlanc, E.I. Associate Member*

LAFAYETTE CHAPTER

Lucas W. Abshire, P.E. Member
Dawson Edward Besson, E.I. Associate Member*
Brady Austin Bogues, E.I. Associate Member*
Bladyn Breaux, Student Member
Louis Broussard, Student Member
Alex Shane Causey, E.I. Associate Member*
Austin Scott Chapman, E.I. Associate Member
Brittni Sierra Charles, E.I. Associate Member*
Matthew Scott Doty, E.I. Associate Member*
Brady Fabacher, E.I. Associate Member
Lance Fontenot, Student Member
Tony Joey lommi-Chittwood, Jr., E.I. Associate Member
Abdelhamid Mizyed, Student Member
Pat Anthony Molbert, P.E. Member
Devan Ski Ortego, E.I. Associate Member*
Christian Paul Rabalais, E.I. Associate Member*
Connor Michael Rawls, E.I. Associate Member*
Matthew Ronkartz, Student Member
Marina A. Saad, E.I. Associate Member*

Grayson Michael Simon, E.I. Associate Member*

Chukwudalu Uba, Student Member
Brandon Noel Wilson, E.I. Associate Member*

LAKE CHARLES CHAPTER

Anastasia Noel Britton, E.I. Associate Member*
Duane Piranio, Individual Sustaining

MONROE CHAPTER

D&W Systems/McIntire Management Group, Corporation Sustaining
Nolan James Matthews, E.I. Associate Member*
Sarah E. Moore, Individual Sustaining

NEW ORLEANS CHAPTER

Fawaz Ayodeji Adesina, E.I. Associate Member*
Amber Bishop, E.I. Associate Member*
Richard Brent Bray, Individual Sustaining
Scott Charles Brown, P.E. Member
Nicholas Alexander Bruck, P.E. Member
Oliver Carleton, Student Member
Christopher Louis Casteix, E.I. Associate Member
Michael John Chorazak, P.E. Member
Tristan Connault, E.I. Associate Member*
Peyton J. Cortez, P.E. Member
Marouf Ramzi Dibeh, E.I. Associate Member*
Mason John Drouant, P.E. Member
Jonathan Dwight, P.E. Member
Mark Robert Ewing, Jr., P.E. Member
Kelsey Elizabeth Frederick, P.E. Member
Robert Lee Guichet, Jr., P.E. Member
Mohammad Jamal Hamed, E.I. Associate Member*
Ashley Herbert, Individual Sustaining
Steven Heurtin, E.I. Associate Member*
Alexis Veronica Hornsby, E.I. Associate Member*
Cameron Wayne Huff, E.I. Associate Member*
Ryen Elon Hyde, E.I. Associate Member*
Austin John Jackson, E.I. Associate Member*

WELCOME NEW MEMBERS

Marvin Jacobs, Jr., E.I. Associate
Member

Lars Jensen, III, E.I. Associate Member*

Linh-Thien Damien Kim, P.E. Member

William Kyle Knighten, E.I. Associate
Member

Christina A. Kramer, P.E. Member

Joseph Michael LeFrere, E.I. Associate
Member*

Lucy Marie Lyons, E.I. Associate
Member*

Christopher Ray Mancuso, P.E. Member

Jasmine Nguyen, Student Member

Kenneth John Pecquet, P.E. Member

Ashley Noelle Robicheaux, E.I.
Associate Member*

Andrew Michael Ruiz, E.I. Associate
Member*

Jacob Anthony Thiaville, E.I. Associate
Member*

Brittany Vegso, Individual Sustaining
Patrick Thomas Washington, E.I.
Associate Member

Christopher Zografakis, E.I. Associate
Member*

NON-RESIDENT CHAPTER

Gregoire Leighton Confer, E.I. Associate
Member*

Jacqueline Day, Individual Sustaining
Jesse Lee Hawkins, E.I. Associate
Member*

Samuel Klepzig, E.I. Associate Member

Elizabeth Kathryn Pohlman, E.I.
Associate Member*

Troy Nicholas Porter, E.I. Associate
Member*

Irving Theng, E.I. Associate Member*

Jean Pierre G. Thompson, E.I. Associate
Member

William Louis Wood, IV, E.I. Associate
Member

SHREVEPORT CHAPTER

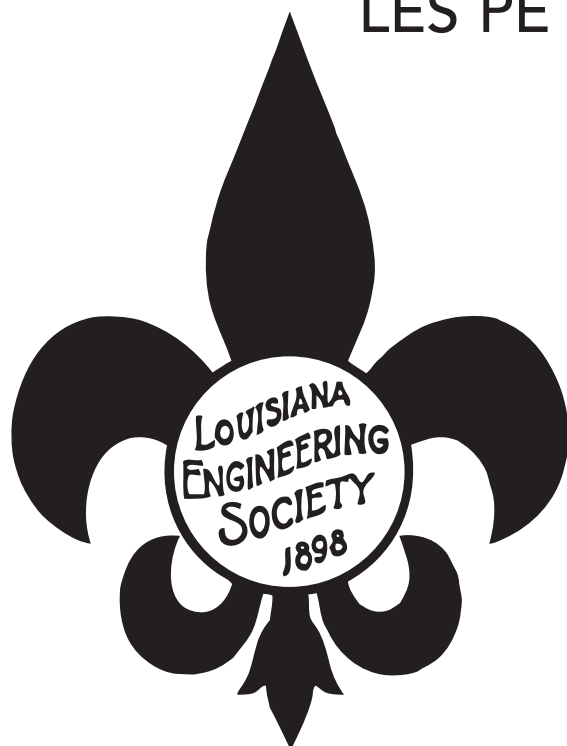
Scott Lambert, P.E. Member

David Miller, E.I. Associate Member

**indicates Under 30 member*

PROTECT YOUR LICENSE WITH LES

LES PE Annual Dues \$101



Since 1898 the *Louisiana Engineering Society* has been the flag bearer for the licensure and professional practice of engineering in Louisiana. LES represents the individual engineer in all technical disciplines and all occupational areas of practice, including construction, education, government, industry and private practice.

SIGN UP HERE:

<https://www.les-state.org/membership-applications/>





4th Annual LA Transportation Partners Golf Tournament

June 9, 2023

Carter Plantation Golf Course

23475 Carter Trace • Springfield, LA 70462

REGISTRATION IS NOW OPEN!

Sponsored by the Louisiana Engineering Foundation (LEF)

All proceeds to benefit the LEF Scholarship Fund

LEF Tax ID 72-0868899

FORMAT: Eighteen-hole tournament (individual stroke play) with a morning round shotgun start @ **8:00 AM**. Flights will be determined by a blind draw from tournament scores. **Players limited to the first 120 paid entries.**

ENTRY FEE: One hundred dollars (\$100.00) per player, including tournament green fee, shared cart, refreshments on course, and lunch. Entry fee must be received with the entry form or online registration no later than **4:00 PM on Friday, June 2, 2023.**

AWARDS LUNCHEON: Awards will be presented and food served after completion of play.

SPONSORSHIPS: All sponsorships will receive recognition at sponsorship level on the website, clubhouse posters, and golf hole signs

MASTERS - \$1500: Access to on-course hole location. Sponsors are encouraged to provide food and beverages on the course. Sponsors must provide tent, table, garbage bags, etc.

EAGLE - \$1,000.00

BIRDIE - \$700.00

PAR - \$350.00

Complementary player registrations are not included in sponsorships.

Ditty Bag and/or door prize donations w/ company logos are welcome: towels, golf balls, tees, etc.

If you are interested in being a tent sponsor or providing larger sponsorship support, please contact Mary Claire or Mark for details and availability.

LEF: Mary Claire Ruckert, maryclaire@les-state.org 225-924-2021

Tournament Contact: Mark Morvant, markjmorvantpe@gmail.com 225-324-1109



Scan to Register



Alexandria Chapter

By: Jeremy Hebron, PE, PLS

The LES 2022-2023 cycle is nearing the end as this is the last article I write as President. I would like to extend a humble thanks to the members of the Alexandria Chapter for allowing me this opportunity and for their support – it has been an honor and pleasure. This experience has been fun and rewarding made with meeting many colleagues and friends along the way all with a common goal to continue our predecessors' work and improve our community, chapter, and profession. I would also like to recognize and thank the other chapter officers whom all contributed to the success of our chapter: James Kory Moss, Vice-President; and Charles Wayne Vollman, Secretary/Treasurer.



Jeremy Hebron, PE, PLS

Our lunch-n-learn meetings have been successful with great food and fellowship, good attendance, and fantastic speakers delivering informative presentations on various topics. The year started in September when we received a technical presentation and an awesome guided tour of the Rinker Materials facility here in Alexandria. In October, Cyndi Glascock with Gainey's provided a wonderful presentation on "Large Custom Civil Engineering Structures". In November, Trudy Boudreaux with Economy Polymers offered an outstanding presentation on "Chemistry of Well Stimulation". In December, Andry Dressel with Gulf States Engineering Company and assisted by RJ Dunn with ADG Engineering delivered an enlightening in-depth technical presentation on "Basics of Variable Frequency Drives". In January, LDH Region 6 Engineering Manager James Monroe provided a perfect informative introduction on a topic that has the current attention of every public water system "Community Water System Accountability Rule". In March, Brandon Faciane with Advanced Drainage Systems (ADS) delivered a great presentation coupled with product demo's on "Resiliency of High-Performance Polypropylene Pipe In Critical Drainage Systems". In April, the Executive Director of the Rapides Area Planning Commission (RAPC), Matt Johns, provided a very informative update on numerous projects surrounding or impacting this region. Our last lunch-n-learn meeting is scheduled for Tuesday, May 2, 2023, @ 11:45 AM and Melissa Becker with the RAPC will be presenting on the current initiatives going on in our area regarding FEMA floodplain management and data and recent federal changes that affect how we manage the floodplains.

We are working with Oak Wing golf course in Alexandria to schedule our MATHCOUNTS fundraiser for an open date in either August or September. Information about these events will be forthcoming in either the newsletter or email notice as we near the event.

We have received a couple of scholarship applications and look forward to selecting and recognizing those applicants at our upcoming meeting in May.

Again, thanks to everyone for their support and participation this year to improve the success of our Alexandria Chapter and LES.

Baton Rouge Chapter

By: Kimberly McDaniel, PE

This year has been incredibly successful for the Baton Rouge Chapter. Our luncheons and events have reached record attendance levels and we've seen an increase in participation from all sectors and age groups. It's an exciting time!

In February during our Engineers Week festivities, we had the privilege of honoring four Baton Rouge area students with scholarships toward their engineering education goals at LSU and Southern. We also recognized six of our chapter members with annual awards. We rounded out the week with a cocktail party celebrating the profession of engineering at The City Club of Baton Rouge where we hosted over 100 members and guests.



Kimberly McDaniel, PE, PTOE, PTP

Our March happy hour at Red Stick Social, an even exclusive for members and sponsors, was well attended.

We were excited to host members of the state board at the event who were in Baton Rouge for the State Board Meeting the next morning. Our April luncheon featured Mr. Scott Kirkpatrick with CRISIS for a discussion about the role industry in our area plays with the regards to a new South Mississippi River Bridge Crossing.

We close out this year of luncheons with our always-favorite Crawfish and Ethics on Friday, May 12. Chris Knotts, P.E., LADOTD Chief Engineer, will present on engineering ethics followed by an afternoon of fun and networking with delicious boiled crawfish.

And finally, we are excited about our upcoming 33rd Annual Wintz Memorial Golf Tournament that will be held on Monday, May 15 at Pelican Point Golf and Country Club. The four-man scramble will also feature on-course contests, a variety of vendor tents serving snacks and drinks along the course, an awards lunch, and much more! It's a great networking opportunity and is always a lot of fun!

As this year comes to a close, I will hand over the reins of the Baton Rouge Chapter to next year's President, Mr. TJ Stokes. It's been an absolute pleasure to serve this chapter for several years on our board. We've brought about many new ideas and changes, all of which have been received with enthusiasm. I appreciate each and every one of our members and supporters for your commitment to helping our chapter grow and prosper. Thank you for allowing me this opportunity to serve you; I cannot wait to see what amazing things the future holds for our chapter!

Bayou Chapter

By: Laura L. Barnes, PE

Hello Bayou Chapter! It's been a busy Spring and looking forward to an eventful Summer here in the Bayou Region.

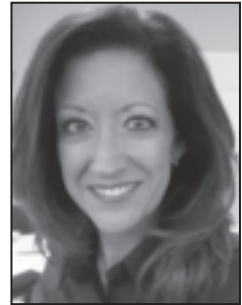
A huge Thank You goes out to Melanie Caillouet, Edgar Benoit, and the other volunteers for their participation in the State MathCounts Competition which was held Friday, March 24th in Pineville, LA. It was a well-coordinated event!

In May we're looking forward to hosting a joint LES/ASCE meeting featuring Lafourche Parish President Archie Chaisson, III as speaker. Also, this summer, we're excited to again be hosting our Golf Tournament after a brief hiatus. I hope you'll join us on Monday, June 5th at Ellendale Country Club on Highway 311 in Houma. The profits from this tournament help support scholarships for local engineering students. I'd like to thank our Golf Tournament Committee: Stan Whitney, Hunter Hebert, John Plaisance, Kevin Rizzo and Kevin DeZarn for their willingness to coordinate what will most definitely be a fun and successful event. It's not too late to participate - if you're interested, please email me for more info.

Don't forget to join your fellow LES friends and colleagues on June 8th and 9th at the Carter Plantation in Springfield, LA. Thursday events include a General Membership Luncheon, the Annual Meeting with 3 PDH Credits Available and an LES Membership Dinner. And for the golfers, Friday is the 4th Annual LA Transportation Partner's Benefit Golf Tournament.

As a reminder, our Membership Drive Contest began on September 1, 2022 and will run through May 31, 2023. Who do you know that would benefit from, and be an asset to, our organization?

For additional chapter meeting information including participating in or suggesting opportunities to volunteer for local events, please email me at LaBarnes@gisy.com.



Laura L. Barnes, PE

Lafayette Chapter

By: Glenn McCall, PE

By the time you all receive this update, we will be well into Spring and nearing the end of the 2022-2023 LES Year. I sincerely appreciate the opportunity I have had to interact with many of you over my tenure as President of the Lafayette Chapter. As I have mentioned in previous articles, if you have not volunteered to serve your profession as an officer in LES please consider doing so in the near future.

The Lafayette Chapter will be led next year by Justin Schexnayder, P.E., with CSRS and I look forward to assisting him as he brings new ideas to the Lafayette Chapter. Justin will officially take over as Chapter President in June at the LES Spring Meeting. Additionally, I want to thank Joey Krefft, P.E. and Austin Doucet, E.I. for their service to the Chapter over the past year. Both Joey and Austin have indicated their desire to remain on the board next year and as such have been nominated to positions of 1st Vice President and 2nd Vice President. Nominations for those two positions as well as Secretary/Treasurer will remain open until Chapter Elections at our May 22nd meeting.

Each year at this time, LES serves its members by tracking and communicating details of relevant State Legislation to its members. This year is no different and with a few important items on the floor. We as a profession need to continue to communicate with our elected officials regarding proposed legislation changes that do not support our duty to protect the health, safety, and welfare of the public.

Finally, as is the tradition at the Lafayette Chapter, we close out the year with the Joint Societies IEE/LES/ASCE Crawfish Boil. This is a great opportunity to network and socialize with many local professionals from our peer societies. As the crawfish boil is the final gathering of the year for the Chapter, I hope that you and your family have a safe and enjoyable summer.

In closing, I ask that you all continue to support Justin and the 2023-2024 Lafayette Chapter Officers as you have done over the past year.



Glenn McCall, PE



Lake Charles Chapter

By: Kalyn Partin, PE

The Lake Charles chapter has had a great year, and we hope to finish well as we come to another year's end. If you are interested in volunteering with the Lake Charles chapter in the new year, whether as an officer or on a committee, please email us at leslakecharles@gmail.com. We would be happy to find a place for you to connect!

In March, our chapter hosted Steven Joubert, PE, with the LA Department of Health, who provided us with an informative presentation on the "Grade Rule for Water Systems". Unfortunately, our April meeting had to be canceled, but our next meeting is scheduled to be held at the Governor's Mansion on Broad Street on Tuesday, May 9. Members will receive a registration email ahead of the meeting with all of the pertinent information. Non-members are always welcome for \$25 per meeting.

Chapter members, be on the lookout for an email with the updated method of communication and meeting registration in the near future. We hope that these new features allow us to continue to grow and provide better information and opportunities to you, as a member. Additionally, we encourage you to like our Facebook page "Louisiana Engineering Society - Lake Charles Chapter" for another way to keep up with the latest information.



Kalyn Partin, PE

Monroe Chapter

By: Dakota Hill, PE

The Monroe Chapter has had a great 2022-2023 year! Not only have we had good attendance, but our monthly speakers have been awesome and our chapter has definitely learned a lot this past year! One of the goals of each meeting is to communicate with our chapter members on continuing education opportunities and other scheduled events hosted by or available through LES. In addition, each meeting includes a technical presentation by a featured guest speaker and one (1) PDH is awarded for attendance. Fellowship among our chapter members is also something to look forward to each month. So, if you've missed our recent meetings consider attending in the coming months. We will have our last meeting of the 2022-2023 Fiscal Year on May 11, 2023. If you can't make it to the last meeting, please join us when we start back in September 2023. Your attendance is important to the success of our chapter. Also, if you know someone who is not currently a member, invite them to join us at the next monthly membership meeting.



Dakota Hill, PE

Below is a list of our speakers this past year:

September 2022 – Chris Cothron with NEI Spoke about "New Technology for Surveying"

October 2022 – Jeff Pike with Louisiana Tech spoke about "Professionalism and Ethics"

November 2022 – Jacob Chism & David Putnam with Sewer Sentry spoke about "Identifying and Solving Inflow in Sewer"

December 2022 – Cyndi Glascock with Gainey's Concrete spoke about "The Amazing Uses of Pre-cast Concrete"

January 2023 – Rob Adamson with Tensar Corporation spoke about "Testing of InterAx Geogrid and the Use of Design Software"

February 2023 – Andy Brown with D&W System Sales spoke about "Smart Technology for Sanitary Sewer Monitoring and SSO Prevention"

March 2023 – Christian Primeaux with ETEC Services, Inc. spoke about "Catching Leaks before They Catch You"

April 2023 – Andy Brown with D&W System Sales spoke about "Public Speaking and Presentation Skills for the Introverted Engineer"

May 2023 – Clint Ewing and Steve Knott with R-S-H Engineering will speak about "Forensic Engineering"

The Monroe Chapter would like to thank each of our speakers this year for taking the time to teach us something new! Without you guys, we would not be the well-rounded chapter we are.

Recent membership reports show the Monroe Chapter has had a jump in Student members, we highly recommend student engineers to join LES and our meetings, it is a great way to build your network with the engineering community around Monroe. Consider extending an invitation to your colleagues who are not members of LES to join us and get involved. Together we can continue our success by increasing our chapter membership!

New Orleans Chapter

By: David Gereighty, PE

Our February meeting was a presentation given by Dr. Daniel Shantz, the Chairman of the Department of Chemical Engineering at Tulane University held at the Glazier Club at Tulane University. Dr. Shantz discussed zeolite, nanostructures, and biomimetics. We were delighted to have over 15 students in attendance for the meeting. Our March meeting was a presentation given by Mr. Mitchel Theriot, former chief of drainage from Jefferson Parish and was held at Don's Seafood Hut in Metairie LA. Mr. Theriot gave an update on the drainage projects currently ongoing and planned in Jefferson Parish. Drainage is always a topic of high interest in the New Orleans area. Our April meeting was a presentation given by Dr. David Dismukes and was held at Two Tony's in New Orleans, LA. Dr. Dismukes is a former executive director and professor at the Center for Energy Studies, Louisiana State University from 2014 through 2022. He was also a professor in the Department of Environmental Sciences in the LSU College of the Coast & Environment (CCE) and is currently also a Consulting Economist at the Acadian Consulting Group. Our May meeting is scheduled for May 17th and will be a joint meeting with the New Orleans chapter of IEEE to be held at Southport Hall and will feature a talk regarding the reconstruction of the Mississippi River crossing of transmission cables after Hurricane Ida by Entergy. We will be recognizing the student scholarship award winners at the meeting. The May meeting will be our last general meeting for the 2022-2023 term.

Please check our website: <https://neworleanschapter.les-state.org> for updates on meeting dates, times, locations, speakers/topics, and if your company is interested in being in NO-LES Chapter Sponsorship Program.

We continue our work with the local Mathcounts coordinator, Ms. Leah Read. The New Orleans region has one student going to the national competition in Orlando, FL.

We also continue our work with FIRST senior mentor, Mr. Louis Jackson. The FIRST Robotics Competition Bayou Regional, <https://www.frcla-ms.org/teams>, hosted 39 high school teams at the Pontchartrain Center in Kenner, LA from March 30-April 1, 2023. Twenty-seven teams from Louisiana and six from Mississippi along with teams from California, Arkansas, Missouri, Florida, and Mexico participated in this year's challenge Charged Up, <https://www.firstinspires.org/robotics/frc/game-andseason>. Combining the excitement of sports with the rigors of science and technology, the FIRST

Robotics Competition is the ultimate Sport for the Mind. High-school student participants call it "the hardest fun you'll ever have." Volunteers at the annual event and team mentors are needed annually.

I would like to take this time to thank our members and sponsors and I hope you and your families are having a great spring.



David Gereighty, PE

Shreveport Chapter

By: Jordan Pearson, PE

The Shreveport Chapter is continuing to host informative presentations at our monthly chapter meetings. Our March meeting was a joint luncheon with ASCE Shreveport Branch members. We had Jeff Pike, P.E. provide the most entertaining presentation on Professionalism and Ethics in Engineering West of the Mississippi. Our April meeting featured Mr. Brandon Frierson with Gainey's Concrete discuss Sewer Treatment Plant Design & Maintenance. We only have one more monthly chapter meeting for the remainder of the year, which will be held on Wednesday, May 10, 2023. We hope to see you in May, and please feel free to invite your colleagues!

We have another volunteer opportunity coming up with Artbreak on April 21-23, 2023. If you would like to help with this event, please let Matt Redmon or one of our officers know!

As we wrap up the 2022-2023 year of LES, I would like to thank our current and new members for their continued support and participation. We always look forward to networking with all of you at our monthly meetings. We would also like to thank our volunteers for MATHCOUNTS and making it a fun experience.



Jordan Pearson, PE

Louisiana Capitol View: from Haynie and Associates

The 2023 Louisiana Legislative session began on April 10th and is set to adjourn on June 8th.

All Professional Engineers should be made aware of, and review legislation introduced by State Rep. Thomas Pressly which will receive its first hearing in the House as soon as mid-April.

LES asks you to Please call or email your State Representative and State Senator and ask them to OPPOSE the following two bills that are bad for PEs.

House Bill 333, authored by Representative Thomas Pressly (Shreveport), restricts the ability of Civil Engineers to design buildings. This bill does not safeguard life, health, and property; but rather endangers them by removing competent professionals from the design process for buildings. **LES OPPOSES**

House Bill 546, also authored by Representative Pressly, allows the use of the word "engineer" or "engineering" in a name, job title, personnel classification, business title, verbal claim, sign, advertisement, letterhead, card, or any other similar use by non "professional engineer" and restricts LAPELS ability to enforce the use of the word "engineer" and "engineering" by individuals and businesses. **LES OPPOSES**

Use the link below to get the contact information for your State Rep and Senator and ask them to oppose HB 333 and HB 546.

<https://legis.la.gov/legis/FindMyLegislators.aspx>

LES will be sending further information and talking points on this legislation by email, please review and act.

The 2023 session is moving quickly, and legislators should be made aware of PE's concerns with HB 333 and HB 546 as soon as possible to have the needed impact. The most effective form of contacting a lawmaker is by calling or emailing their office and asking if they have time to discuss your concerns on the legislation. Be sure to identify the bill numbers/author when making contact and provide your name and what business you work for and where you live. The text and common language digest of the legislation can be found by searching for the bill number under the "Bills" tab at **www.legis.la.gov**.

As a reminder, this is the last session of the current legislative term, all lawmakers' districts will be up on the ballot Saturday, October 14th, 2023. Now is a great time to reach out to your lawmakers and express your

position on these policy proposals and their impact on the public's safety and well-being.

ABOUT OUR FIRM:

Since 1980, Haynie & Associates has *raised the standard* for Louisiana lobbying and government relations firms. With a tireless work ethic, impeccable professionalism, focus on detail, and an in-depth understanding of the legislative process, we have earned the respect of state lawmakers, corporations, and clients throughout the United States – and consistently produced milestone successes for *high-profile clients* across many industries and professions. If you demand proven skills, established credibility, and unfailing integrity, our *reputation* speaks clearly.



Ryan Haynie and Randy Haynie

Haynie & Associates

P.O. Box 44032

Baton Rouge, LA
70804

Randy K. Haynie
President

randy@haynie.com
(225) 336-4143

Ryan K. Haynie
Vice-President

ryan@haynie.com
(225) 336-4143



Act 721 passed in the 1975 Legislature amended Chapter 10 to Title 38 of the Louisiana Revised Statutes of 1950 by adding thereto a new Part VII, Selection of Professional Services for Public Contract. Three Boards – Architect, Engineer, and Landscape Architect Selection – are authorized under this Act. Each board selects persons or firms to perform certain professional services for public contract.

The Act refers to the Louisiana Engineering Society, specifying the following: The Louisiana Engineers Selection Board shall be composed of six members. Two members shall be named in an election conducted by the Louisiana Engineering Society at which all properly licensed engineers residing in the State of Louisiana may vote for positions to be filled. LES has two positions to fill this year, one term ending June 30, 2023, and one ending December 31, 2023.

The LES Nominating Committee nominates Ali M. Mustapha, P.E. for July 1st position and Jim Ferguson, P.E. for the January 1st position.

Each Louisiana Registered Professional Engineer working and living in the State is eligible and urged to vote.

Space on the ballot is provided for write-in candidates. A write-in candidate must be a LA registered Professional Engineer and must have agreed to serve if elected. No employer or stockholder shall be eligible to receive agency contracts during the term of his service, and for a period of six months thereafter.

Louisiana Engineers Selection Board LES Ballot



Scan QR code to vote

Meet James “Jim” Ellingburg, P.E.

LES President 2023 - 2024



James “Jim” Ellingburg, P.E.

James “Jim” Ellingburg, P.E., is a Project Engineer with the firm of Lazenby & Associates, Inc., a Civil Engineering and Land Surveying firm in West Monroe, Louisiana. Jim joined the firm in 2008 after graduating from Louisiana Tech University, where he earned a Bachelor of Science Degree in Civil Engineering. He is a registered Professional Engineer in the states of Louisiana and Arkansas.

Jim’s professional experience includes the design and project management for various drainage, transportation, water distribution, and sanitary sewer collection projects for various independent, municipal, parish, and industrial clients. Jim is currently the Construction Engineer over several roadway construction projects.

Jim has been an active member of the Monroe Chapter of the Louisiana Engineering Society (LES) since 2008. He became an officer in 2010, two (2) years after joining, and has since served as newsletter editor, Secretary/Treasurer, 2nd Vice President, 1st Vice President, and President. Jim has also served on the LES Board of Direction as a State Director, and he has served as the Chair of the Joint Engineering Societies Conference (JESC) Committee since 2016.

In addition to LES, Jim also holds professional memberships in the National Society of Professional Engineers, the American Council of Engineering Companies of Louisiana, and the American Society of Civil Engineers. He is also a graduate of the Monroe Chamber of Commerce’s Leadership Ouachita program.

In addition to being a dedicated professional engineer, Jim is devoted to his family. He currently resides in Bastrop, LA with his wife, Jennifer, and their children, Emmalyn and James Evan. They are active members of New Friendship Baptist Church in Bastrop.

Scholarship Committee Report

This spring, LES provided three \$500 scholarships to engineering students from Louisiana engineering colleges. The scholarship winners were selected based on their financial need, academic achievements, and participation in student engineering, civic, and community service organizations. The funding for LES scholarships come from three sources; dues check off contributions of LES members and individual donations, interest from annuity invested funds, and interest from an endowment with Louisiana Engineering Foundation. We commend these

individuals for their hard work and wish them continued success with their engineering studies and careers.

We encourage all members to support engineering scholarship funding by attending the **4th Annual LA Transportation Partners Golf Tournament at Carter Plantation Golf Course in Springfield, LA on Friday, June 9, 2023.**

This event, along with the dues check-off on your dues statement, raises money for scholarships! Your contributions help ensure that engineering education continues to thrive in Louisiana.

The 2023 LES Scholarship Recipients are:

XUAN DINH
University of New Orleans

DAVID NGUYEN
Louisiana State University

MICHELLE LAM
University of Louisiana at Lafayette



State MATHCOUNTS® Competition

The Chapter Competitions took place on February 1-28. The top students from the Chapter Competitions moved to the State competition. The State Competition took place on March 24th in Pineville, Louisiana.

The top individuals from each state will receive an all-expense-paid trip to the Raytheon Technologies MathCounts National Competition from May 13th through May 16th in Orlando, Florida.

There were 43 schools that participated in the state competition, represented by 97 students.

The schools participating in the state competition included:

Alexandria Chapter

Alexandria Country Day School
Grace Christian School
Rapides Academy
Tioga Junior High School

Baton Rouge Chapter

Episcopal School of Baton Rouge
Glasgow Middle School
St. Thomas More
University View Academy

Lafayette Chapter

Ascension Episcopal School
Belle Place Middle School
David Thibodaux STEM Magnet Academy
Episcopal School of Acadiana
Our Lady of Fatima School
Youngsville Middle School

Lake Charles Chapter

Deridder Junior High School

Monroe Chapter

A. E. Phillips Laboratory School
Cedar Creek School

New Orleans Chapter

Audubon Charter School
Haynes Academy For Advanced Studies
Lake Castle Slidell Private School

Shreveport Chapter

Benton Middle School
Caddo Parish Middle Magnet School
Cope Middle School
Southfield School

The top 4 students that will represent Louisiana in the National Competition are:

Nate McLean, Episcopal School of Baton Rouge

Zian Zhuang, Glasgow Middle School

Aubrey Wynn, Caddo Middle Magnet School

Yuhang Wu, Haynes Academy for Advanced Studies

We wish these competitors the best of luck in this competition year!

Congratulations to all these students and to all of the participants! **MATHCOUNTS** could not be put on without the dedicated help of many volunteers and support from the community.

Thank you to our 2023 MATHCOUNTS Sponsors!

Albemarle Foundation
Forte & Tablada, Inc.
M & E Consulting
Modjeski & Masters
T. Baker Smith, LLC
BluDot Engineering, LLC
Domingue, Szabo & Associates, Inc.

Manchac Consulting Group
Mohr and Associates, Inc.
Morgan Goudeau & Associates, Inc.
Raley & Associates
Revolution Engineering, Inc.
SJB Group, LLC

QSM®

Solutions based
products for ...

civil engineering,
construction site-prep,
wastewater treatment,
and municipal water.

QualitySitework.com
Call - 855-469-2015

*Get the
SCOOP*

Louisiana



Louisiana811.com

*Call 811 or visit Louisiana811.com at least two full work
days in advance before digging.*

That's all it takes to notify **Louisiana 811** members,
so they can mark nearby utility lines and pipelines
to prevent injury and costly accidents.

CALL OR CLICK BEFORE YOU DIG. IT'S THE LAW. IT'S FREE.



ENVIRONMENTAL TECHNICAL SALES, INC.

Manufacturer's Representative
For

WASTEWATER TREATMENT
WATER TREATMENT
SOLIDS HANDLING
STORM WATER
WATER METERS - FUNDING AVAILABLE

Municipal & Industrial Markets:

LOUISIANA
MISSISSIPPI
ARKANSAS
WESTERN TENNESSEE

In-Depth Knowledge & Years of
Experience With

AERATION / MIXING
CLARIFICATION
CHEMICAL DISINFECTION
ULTRA-VIOLET (UV) DISINFECTION
FILTRATION
HEADWORKS
ODOR CONTROL
STORM WATER PUMPING
WATER METERING
AND SO MUCH MORE!

7731 Office Park Blvd.
Baton Rouge, LA 70809
800-255-1247
www.etc-usa.com



New Plant Equipment

Plant Improvements

Plant Rehabs

Equipment Retrofits

Pump Stations

Parts / Repairs

Water Metering Services

Service For New & Existing
Equipment

START UP SERVICES
SERVICE CONTRACTS
PREVENTIVE MAINTENANCE SERVICE
ASSESSMENT SERVICE
REPAIR SERVICE



Daniel Hebert, President
Brady Sessums, Vice President
Abigail Ally, Parts & Service
Joseph Hebert, Sales
Christian Primeaux, Water Meter Sales
Chad Robinson, Water Meter Sales
Ronnie Hebert, Chairman

'We're Here When You Need Us

Cadence Insurance's name may be changing, but as we've grown, we've stayed true to our relationships and focus. At the same time, we've created a stronger, more sophisticated and more diversified organization, with a greater range of offerings and depth of expertise.

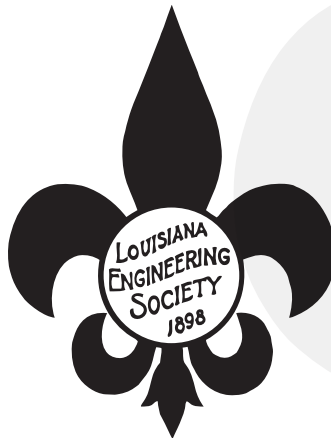
Our longstanding customers look to us for stability and continuity. We are excited to have the opportunity to continue serving you as Cadence Insurance. We'll be here when you need us, for the long term.



CadenceInsurance.com



©2022 Cadence Insurance. All rights reserved. Cadence Insurance is a wholly owned subsidiary of Cadence Bank. Insurance products are: Not a deposit • Not FDIC insured • Not insured by any federal government agency • Not guaranteed by the bank • May go down in value. Cadence Insurance is an insurance agent and not an insurance carrier. Always review your policy for coverage terms and conditions.



LES CORPORATE SUSTAINING MEMBERS

AILET, FENNER, JOLLY & MCCLELLAND INC.

O 318.425-7452
F 318.425-4622

3003 KNIGHT STREET, SUITE 120
SHREVEPORT, LA 7105
WWW.AFJMC.COM



Angelette-Picciola
Geotechnical Engineers & Surveyors

PO Box 970 • Larose, LA 70373
(985) 798-7700



Ardaman & Associates, Inc.
GEOTECHNICAL ENGINEERS

225-752-4790
ardaman.com



BALAR ASSOCIATES, INC.

631 MILAM STREET, SUITE 300 • SHREVEPORT, LOUISIANA 71101
PHONE: 318-221-8312 • FAX: 318-424-6508

E-MAIL: balar@balar-engineers.com • WEB: www.balar-engineers.com



Darius Bonton, PE, MBA
Principal Engineer

225.588.3843
darius@bontonassociates.com
www.bontonassociates.com



Baton Rouge 225.292.1048 New Orleans 504.588.1000 Fort Worth 817.832.4174
WWW.ARCADIS.COM



Sanitary & Storm Sewer
Cleaning and CCTV Inspection

Baton Rouge | Bossier City | Lake Charles

10452 S. Glenola Place
Baton Rouge, LA 70803
Tel: (225) 448-5929
www.atkkraservices.com



14000 Ambassador Office, Suite 100
Baton Rouge, Louisiana 70817
Phone: 225-402-4040 Fax: 225-402-4047

BRAMMER
ENGINEERING, INC.

401 Edwards Street, Suite 1510
Shreveport, LA 71101
318.429.2345 • www.brammer.com

LES CORPORATE SUSTAINING MEMBERS

 <p>BRIS Engineering, LLC Brown & Root 8585 Archives Ave., Suite 210 Baton Rouge, LA 70809 225-932-6000</p>	 <p>D. WALTER JENSEN, JR. P.E., P.L.S. D.W. Jensen & Associates, L.L.C. Civil and Consulting Engineers - Baton Rouge, Louisiana Phone: (225) 493-8561 Fax: (225) 493-5843 dwj@dwjinc.com 440 Kirby Street Lake Charles, LA 70601-5289</p>	 <p>GREG ROACHE President 28821 Green-Way, Bk. Houston, LA 77044 CELL: (936) 969-2722 PH: (281) 367-2788 FAX: (281) 367-3888 www.gaineyinc.com www.gregroache.com</p>	 <p>INNNOVATIVE FLOW SOLUTIONS, INC. 400 Mariners Plaza Blvd., Ste. 420 Mandeville, LA 70448 www.ifsproducts.com Office: 985.626.5143 Cell: 985.326.3849 Fax: 985.626.5145 glenn.mesman@ifsproducts.com</p>
 <p>BUCHART HORN ENGINEERS ARCHITECTS PLANNERS 18163 East Petroleum Drive Suite A Baton Rouge, LA 70809-6104 (225) 755-2120 bucharthorn.com 527 West Esplanade Ave. Suite 302 Kenner, LA 70065-2568 (504) 405-3936</p>	 <p>digital engineering Dedicated Engineering for a Better Community. TRANSPORTATION WATER RESOURCES www.deii.net</p>	 <p>GOTECH, INC. Consulting Engineers 8383 Bluebonnet Blvd. Baton Rouge, LA 70810 RHAOL A. GUILLAUME, P.E., FASCE PRESIDENT RHAOL@GOTECH-INC.COM • OFFICE: (225) 766-5358 CELL: (225) 419-9519 • FAX: (225) 766-5879 WWW.GOTECH-INC.COM</p>	 <p>KSA A DYNAMIC PERSPECTIVE 1111 Hawn Avenue Shreveport, LA 71107 ksaeng.com phone: 318.221.7501 fax: 318.221.7635 info@ksaeng.com</p>
 <p>BKI BURK-KLEINPETER, INC. ENGINEERS-ARCHITECTS-PLANNERS-ENVIRONMENTAL-SCIENTISTS 4176 Canal Street New Orleans, LA 70119 www.bklu.com T: 504-486-5901 F: 504-488-1714 info@bklu.com</p>	 <p>DIS-TRAN PACKAGED SOLUTIONS 4025 Highway 28 E Baton Rouge, LA 70802 225-488-5276 Joseph W. Baker, P.E., P.Eng. President jwb@dis-tran.com Street: 318.767.5641 Mobile: 318.623.9573 dis-tran.com</p>	 <p>BATON ROUGE, LA 225.389.8000 GONZALES, LA 225.844.5523 SLIDELL, LA 985.630.3000 www.gsaengineers.com Civil, Environmental, Transportation, Construction Management, Planning Services</p>	 <p>Our designers combine in-house engineering capabilities with years of professional experience to help create innovative designs involving architecture, engineering, and construction. www.keoghcox.com</p>
 <p>CASE INTERNATIONAL • ENGINEERING • PROJECT MANAGEMENT • CONSTRUCTION ADMINISTRATION Office: 337-232-3336 P.O. Box 4825 Lafayette, Louisiana 70502 www.casengr.com</p>	 <p>102 Asma Boulevard Suite 305 Lafayette, LA 70508 (337) 232-5182 www.dsaengineering.com</p>	 <p>Managed IT • Managed Cybersecurity Business Continuity • Disaster Recovery 25+ Years of Serving Engineering Firms across Louisiana sales@gulfsouthtech.com • 225.216.2169</p>	 <p>Keystone ENGINEERING, INC. www.keystoneengr.com Houston 281.493.8227 Lafayette 337.294.3400 Baton Rouge 225.346.3000 Metairie 504.884.9445 Metairie 504.884.9445</p>
 <p>C. J. SAVOIE CONSULTING ENGINEERS, INC. ENGINEERS PLANNERS C.J. SAVOIE, P.E. CIVIL ENGINEER P.O. DRAWER 8 FAIRPORTVILLE, LA 70501 c.savoie@cjpe.com FAIRPORTVILLE 985-899-0240 FAX # 985-899-0705</p>	 <p>DDG SERVING CLIENTS ACROSS THE GULF SOUTH FOR OVER 25 YEARS! CONSTRUCTION MANAGEMENT • ARCHITECTURE • CIVIL ENGINEERING • ENVIRONMENTAL ENGINEERING • PLANNING www.ddginc.com • 713.664.6400</p>	 <p>H. Davis Cole & Associates, LLC Consulting Engineers H. Davis Cole, P.E. Managing Member 1340 Poydras Street, Suite 1800 New Orleans, LA 70112 Tel: (504) 586-0020 Fax: (504) 586-2010 Email: hcole@hdcra.com Civil & Environmental Engineering www.hdcra.com New Orleans, LA Baton Rouge, LA</p>	 <p>LOUISIANA TESTING & INSPECTION, INC. A PROFESSIONAL ENGINEERING CORP. CERTIFIED CONCRETE & ASPHALT INSPECTORS CONSTRUCTION INSPECTORS JOSEPH GUERREAU, PRESIDENT P.O. BOX 980 LAFAETTE, LA 70508 PROFESSIONAL SOIL & FOUNDATION ENGINEERING & TESTING SERVICES 807-68-6471</p>
 <p>CORNERSTONE ENGINEERING, LLC "Helping clients achieve their goals" Maericka McKinzie, Sr., P.E. President 803 Poydras Street, Suite 900 New Orleans, LA 70002 Office: 504-448-6789 Fax: 504-448-4939 www.cornerstoneengineeringllc.com Mobile: 504-941-0599 www.cornerstoneengr.com</p>	 <p>E3 ELECTRICAL CONTRACTING / ENGINEERING POWER • AUTOMATION • CONTROL COMMERCIAL • INDUSTRIAL • MARINE • PANELS (985) 223-0778</p>	 <p>Lennie G. Harper & Associates, Inc. CIVIL ENGINEERING • SURVEYING • CONSTRUCTION 2760 Hwy 984 Belt City, LA 70608 3007 Good Chester Hwy. Good Chester, LA 70643 Email: lharper@lga-inc.com www.lga-inc.com PH: 507.961.1879 Fax: 507.961.1878</p>	 <p>WINWATER WORKS 125 Medical Park Drive Lafayette, LA 70508 (337) 289-0032 WHOLESALE OF PIPE • VALVES • FITTINGS WATER • SEWER • GAS • DRAINAGE BRYAN LAVERGNE President blavergne@winwaterworks.com 1-800-874-0430 337-289-0032 FAX: (337) 289-0130 CELL: (337) 661-0130</p>
 <p>COYLE ENGINEERING CO., INC. Civil Engineering • Land Surveying P. O. Box 6177 Bossier City, LA 71171-6177 Phone: (318) 746-8967 www.coyle.pro 3825 Benton Road Bossier City, LA 71111 Fax: (318) 742-5118</p>	 <p>ESI Supply Environmental • Safety • Industrial ESI Supply, LLC P.O. Box 180759, Richland, MS 39218 111 Aero Smith Drive, Richland, MS 39218 Phone: 601-933-4910 • Fax: 601-988-1282 rcraft@esupply.net www.esupply.net</p>	 <p>HELICAL CONCEPTS, INC. DISTRIBUTOR CHANCE CIVIL CONSTRUCTION Josh Lindberg P.O. Box 1238 710 Cooper Dr. Wylie, Texas 75098 www.helicalpier.com (972) 442-4493 ofc (214) 803-0207 cell josh@helicalpier.com</p>	 <p>LANIER & ASSOCIATES CONSULTING ENGINEERS, INC. Experience By Design... Since 1914 JOHN RUTHERFORD jrutherford@lanier-engineers.com office: 504-895-0388 cell: 504-810-2289 4101 Magazine Street New Orleans, LA 70112 www.lanier-engineers.com</p>
 <p>Dennis M. Hymel, Jr., P.E.* President Engineering Manager P.O. Box 370 Vacherie, LA 70090 www.crescentengr.com Cell: 225-413-4979 Main: 225-329-1742 dennis.hymel@crescentengr.com</p>	 <p>75 YEARS 1948-2023 EUSTIS ENGINEERING LLC LOUISIANA TEXAS MISSISSIPPI GEOTECHNICAL ENGINEERING CONSTRUCTION MATERIALS TESTING</p>	 <p>HUVAL & ASSOCIATES, INC. Consulting Engineers 922 West Pont Des Mouton Road Lafayette, LA 70507 (337) 234-3798</p>	 <p>LAZENBY & ASSOCIATES, INC. Civil Engineering & Construction PHIL D. FRIER, P.E., F.L.S. Senior Vice President 2600 North Pine Street West Monroe, LA 71290 Tel: 225-339-2734 ext. 125 Fax: 225-339-2734 Cell: 225-339-1260 pfrier@laizenbyengr.com</p>
 <p>CSRS BUILDING STRONGER SMARTER COMMUNITIES TOGETHER. Helping our clients plan, design, build, and implement with confidence so they can achieve their goals today, with services in mind. An NEC Firm Specializing in Program Management, Disaster Recovery, Crisis Representation and Brand Management</p>	 <p>EVANS-GRAVES ENGINEERS, INC. Since 1964 9029 Jefferson Hwy. Suite 200 Baton Rouge, LA 70809 P: (225) 626-1620 F: (225) 626-9075 www.evans-graves.com 909 Poydras St. Suite 3000 New Orleans, LA 70112 P: (504) 536-8190 F: (504) 536-8199</p>	 <p>ILD Jack R. Little President 7353 Highland Road, Ste. B-279 Baton Rouge, LA 70808 Phone: (225) 788-2782, x171 Fax: (225) 788-2751 Cell: (225) 933-8843 jrl@ildpower.com</p>	 <p>LEVINGSTON FULL SERVICE ENGINEERING Civil-Structural-Piping-Mechanical-Process Electrical-Instrumentation-Automation-Controls FEL Engineering Construction Execution FEA/Simulation In-Plant Staffing Services 210 Teal Road, Sulphur, Louisiana 70665 www.levingston.com</p>
 <p>CYCLECONSTRUCTION 6 E 3rd Street - Kenner, LA 70062 p: 504.467.1444 • f: 504.467.1222</p>	 <p>FORTE & TABLADA Consulting Engineers/ Land Surveyors www.ForteandTablada.com 9107 Interline Avenue Baton Rouge, LA 70809 o 225.927.9321 f 225.927.9326</p>	 <p>Infinity Engineering Consultants, LLC • Civil • Structural • Mechanical • Electrical • Marine 504-364-0548 phone 504-355-0355 fax www.infinityinc.com 4005 Division Street Metairie, LA 70002 info@infinityinc.com</p>	

LES CORPORATE SUSTAINING MEMBERS

 <p>1304 BERTRAND DRIVE SUITE F7 LAFAYETTE, LA 70506</p> <p>OFFICE 337 234 7474 FAX 337 234 7774</p>	 <p>Mott MacDonald</p> <p>450 Poydras Street Suite 2025 New Orleans, LA 70130 T 504.799.5434 mottmac.com/neworleans</p>	 <p>PROFESSIONAL ENGINEERING CONSULTANTS CORPORATION</p> <p>7600 Innovation Park Drive • Baton Rouge, LA 70820 Phone: 225.769.2810 • Fax: 225.769.2882</p>	 <p>T. BAKER SMITH A DIVISION OF TBS GROUP</p> <p>Kenneth Wm. Smith, P.E., P.L.S. President & CEO</p> <p>Street Line: 888.228.8346 Cell: 888.882.3432 kbsmith@tbsgroup.com www.tbsgroup.com</p> <p>Engineering • Consulting • Construction • Innovative Solutions</p>
 <p>10542 S. Glenridge Place Baton Rouge, LA 70820 M: (225) 468-2812 Fax: (225) 464-9090 www.manchacgroup.com</p>	<p>Manish Mardia, P.E. President Cell: (504) 933-1887</p>  <p>New Orleans Office: 4047 South Canfield Ave. Ste. 120 New Orleans, LA 70122 Office: (504) 570-6088</p> <p>Mobile Office: 4009 Carondeau Parkway Metairie, LA 70006 Office: (504) 508-7700</p> <p>Assurance Office: 2005 LA 1057 19 Metairie, LA 70002 Office: (225) 532-6620</p>	 <p>PROVIDENCE ENVIRONMENTAL ENGINEERING ENVIRONMENTAL TECHNOLOGY</p> <p>www.providenceeng.com</p> <p>Providence Engineering and Environmental Group LLC</p>	 <p>TECH-CON Fast Track Process Control Supplier</p> <p>Harley Nethken Chief Operating Officer</p> <p>Strong products Even stronger service.</p> <p>888.445.1212 1.800.749.1225 Cell: 985.296.8212 hnet@tech-con.net TECH-CON.NET 37342 Allen Road Bossier, LA 70601 certified</p>
 <p>Andy Brown</p> <p>Cell: 980(1) 917-0340 Office: 980(1) 824-8522 Fax: 980(1) 909-0258</p> <p>1331 Cynthia Road Clinton, MS 39006 andy@montreonline.net</p>	 <p>NEEL-SCHAFFER Solutions you can build upon</p> <p>Engineers Planners Surveyors Environmental Scientists Landscape Architects</p> <p>FIVE LOUISIANA LOCATIONS</p> <p>BATON ROUGE 225-924-0235 LAFAYETTE 337-232-6111 MANDEVILLE 985-674-9620 NEW ORLEANS 504-875-4662 SHREVEPORT 318-221-7117</p> <p>www.neel-schaffer.com</p>	 <p>4913 Sheel Road Bossier City, LA 71111 Phone: 318-752-9023 • Fax: 318-752-9025 www.raleyandassociates.com</p> <p>RALEY AND ASSOCIATES, INC. Civil & Structural Engineering, Surveying, Planning & Consulting</p>	 <p>Louisiana Offices Baton Rouge Lake Charles New Orleans Shreveport 225-344-6852 227-479-5340 504-819-3628 318-888-6849 www.terracon.com</p> <p>Environmental • Facilities • Geotechnical • Materials</p>
<p>JAMIE WEATHERS</p> <p>james@materialresources.org materialresources.org</p> <p>Office: 225-267-6464 Cell: 225-461-1028</p> <p>1382 Safe Energy Dr. Port Allen, LA 70767</p>	 <p>KURT M. NIXON, PE, PLS</p> <p>OFFICE: 318 • 747 • 9669 CELL: 318 • 860 • 0730 KNIXON@NIXONENG.COM</p> <p>4011 HAMILTON ROAD SUITE 100 BOSSIER CITY, LA 71111</p>	 <p>REVOLUTION ENGINEERING ARCHITECTS, INTERIORS, AND LANDSCAPE DESIGN</p> <p>NEW ORLEANS, LA 70112 AND PORT BOSSIER CITY, LA 70112 www.revolutionengineering.com</p>	 <p>Geotechnical Engineering • Deep Foundations Testing Environmental Services • Construction Materials Testing</p> <p>1.800.887.9932 TWEINC.COM</p> <p>Offices throughout Texas and Louisiana</p>
 <p>Meyer & Associates, Inc. Consulting Engineers</p> <p>600 N. Cities Service Hwy. Sulphur, Louisiana 70663</p> <p>(337) 625-8353 Fax: (337) 625-8453 www.meyerassociates.com</p>	 <p>2750 Lake Villa Dr Ste 100 Metairie, LA 70002 (504) 885-0500</p>	 <p>Sellers & Associates, Inc. ENGINEERS SURVEYORS</p> <p>148-B EASY STREET LAFAYETTE, LOUISIANA 70506-3095 (337) 232-0777 • FAX (337) 232-0851 www.sellersandassociates.com</p> <p>100 THOMAS STREET ABBEVILLE, LOUISIANA 70510 (337) 893-2808</p>	 <p>1815 Poydras Street, Suite 2206 New Orleans, LA 70112 trigon@trigonassociates.com</p> <p>Tel: 504-585-5767 Fax: 504-585-5747</p>
 <p>Meyer, Meyer, LaCroix & Hixson Engineers and Land Surveyors</p> <p>Alexandria Ph: (318) 448-0888</p> <p>Ruston Ph: (318) 255-7296</p> <p>www.mmlh.com</p>	 <p>THOMAS C. DAVID, JR. P.E., P.L.S.</p> <p>Pan American Engineers, LLC</p> <p>1717 Jackson Street P.O. Box 89 Alexandria, LA 70001-0089</p> <p>TEL: 338.474.2300 FAX: 338.473.2275 Email: tommy@panee.com</p>	 <p>Steven Kotler Project Development Manager, Regional SACS #01036</p> <p>The Sherwin-Williams Company 1284 South Range Ave., Suite A, Denham Springs, 70725 steven.kotler@sherwin.com www.sherwin.com/projective Cell: 225.739-8662</p>	<p>Traffic Engineering - Transportation Planning New Orleans Baton Rouge</p> <p>www.urbansystems.com 504-523-5511</p> <p>Certified DBE, WBE & WOSB</p> 
 <p>We Make a Difference</p> <p>2600 ConPlace Dr., Suite 400, Baton Rouge, LA 70801 225.205.0044 cbaggar@bakerintl.com</p> <p>mbakerintl.com</p>	 <p>Joseph C. Piccola, II, PE, FLS.</p> <p>P.O. Box 887 115 Piccola Parkway Piccola Complex Cov. DR. Louisiana 70601 www.piccola.com</p> <p>Phone: (800) 482-5788 Fax: (800) 482-0407 E-Mail: jpiccola@piccola.com</p>	 <p>Drain & Planning Transportation Site Development Utility Systems Land Surveying Construction Services Real Estate Services</p> <p>www.sjbgroup.com P.O. Box 1791 Baton Rouge, LA 70821-0791 (225) 769-0489 (225) 769-0596 fax</p>	 <p>Volkert, Inc.</p> <p>Baton Rouge Office: 7987 Office Park Blvd Baton Rouge, LA 70805 Office: (225) 218-9440 Fax: (225) 218-9471 info@volkert.com</p> <p>New Orleans Office: 3801 Canal Street Suite 210 New Orleans, LA 70119 Office: 504.488.8002 Fax: 504.488.8004 www.volkert.com</p>
 <p>FULL-SERVICE BRIDGE ENGINEERING</p> <p>1100 Poydras Street, Suite 900 New Orleans, LA 70163 neworleans@modjeski.com 504-524-4344 www.modjeski.com</p>	 <p>Port Aggregates, Inc. 337-824-ROCK(7625) www.portaggregates.com</p>	 <p>Professional Land Survey & Consulting Services</p> <p>Office: 1.202.585.4085 Fax: 1.202.585.4084 www.southsurvey.net</p> <p>LLC, Ardahan Drive Lafayette, LA 70507</p>	 <p>Waldemar S. Nelson and Company INCORPORATED</p> <p>Engineering, Architectural, Environmental and Project Management Services Founded 1945</p> <p>1389 St. Charles Ave. New Orleans, LA 70130 2 Northport Drive Suite 140 Houston, TX 77060</p> <p>Telephone: (504) 525-8281 Telephone: (281) 999-1888 www.wnsn.com</p>
<p>Mohr and Associates, Inc. Consulting Civil Engineers & Land Surveyors</p> <p>1124 N. Shreve Avenue - Suite 301 Shreveport, Louisiana 71107-0529 Telephone: 318/586-7180 FAX: 318/403-4400 • Cell: 318/747-9235 E-mail: acraig@mohrandassociates.com</p> <p>J. ANDREW CRAIG Professional Engineer (S.A., A.E., T.E.) Professional Land Surveyor (S.A.)</p>	 <p>ARCHITECTS • ENGINEERS PROJECT MANAGERS • INTERIORS</p> <p>88 General Street, Suite 300, Lafayette, LA 70502 Office: (337) 237-4857 Fax: (337) 537-0368</p>	 <p>Stantec Consulting Services 500 Main Street, Baton Rouge, La 70801 (225) 765-7400</p>	 <p>Sims F. Regard, Jr. Vice President - Estimating & Project Management</p> <p>2601 N. Flannery Road Baton Rouge, LA 70804 sfr@waskey.com www.waskey.com</p> <p>Direct: (225) 492-4025 Mobile: (225) 327-1424 Main: (225) 909-4752 Fax: (225) 909-4758</p>
 <p>CIVIL ENGINEERS • LAND SURVEYORS</p> <p>1701 WEST LEBLANC STREET NEW ORLEANS, LA 70116 (504) 488-4232</p>	 <p>1811 N. Canaway Blvd. Suite 15 Metairie, LA 70001</p> <p>Office: (504) 424-5881 Email: info@pi-enc.com</p>	<p>Stokes & Spiehler USA, Inc. PO Box 52006 Lafayette, LA 70505 (337) 233-6871</p>	 <p>Kevin Mewbourn Senior Outside Sales Manager</p> <p>Direct: 408-802-0286 T: 408-802-8000 F: 408-802-0478 Email: kmewbourn@weigh-tech.com</p>

**Need
Subsurface
Utility Engineering?**



TO THE RESCUE!!!

Finding it difficult to obtain reliable underground utility information?

Worried about costly setbacks like design deviations or utility damage?

SJB Group's Subsurface Utility Engineering team can locate and map underground utilities and identify potential conflicts. Additionally, we offer utility coordination and relocation cost estimates.

Multi-disciplined consulting firm offering:

- Civil Engineering
- Subsurface Utility Engineering
- Planning
- Land Surveying
- Landscape Architecture
- Construction Services